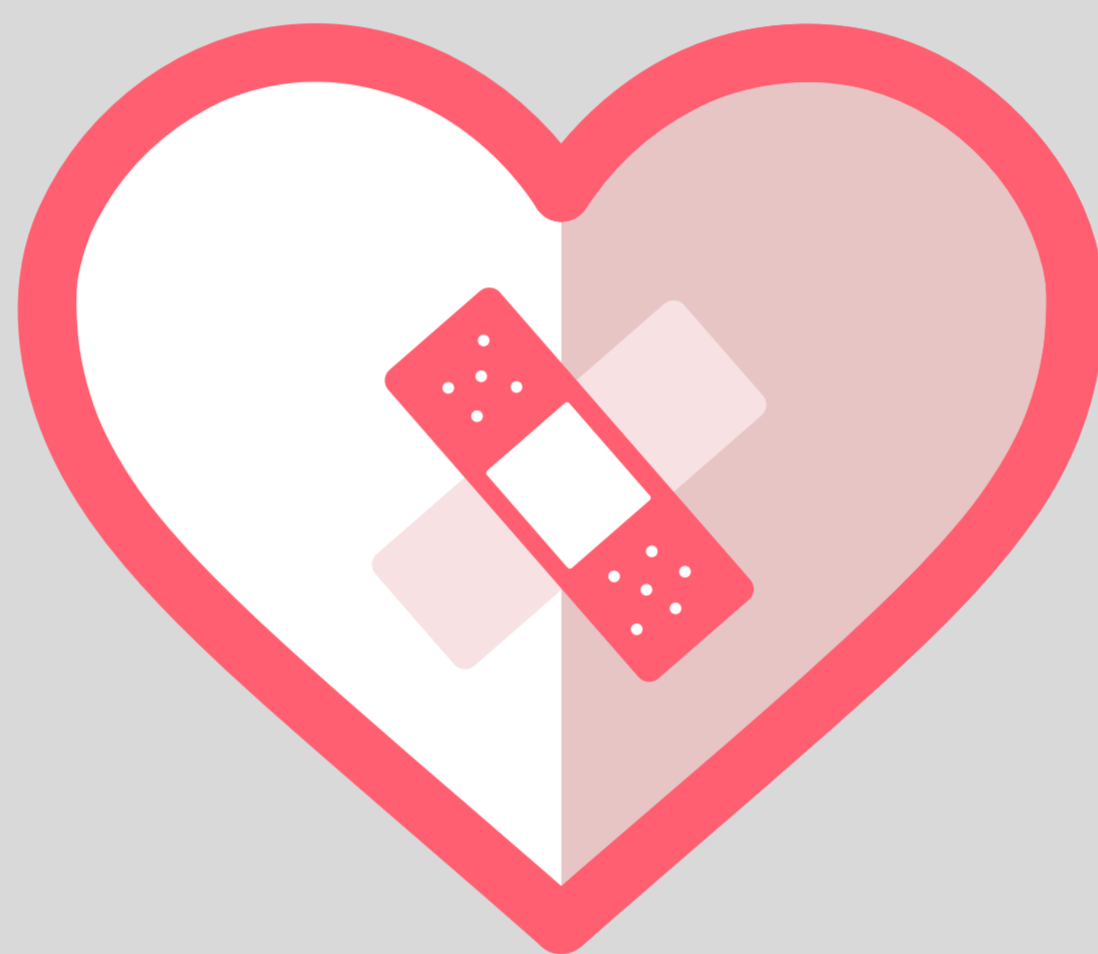


HEART FAILURE

Heart Failure is a clinical diagnosis, supported by investigations such as blood tests and echo.

Echo is an ultrasound of the heart which looks at function of the heart pump. This can differentiate heart failure into preserved or reduced ejection fraction (EF)



NYHA scoring assesses symptoms and therefore function but is dynamic – it will change with treatment and with progression.

- I – No physical limitation of activity
- II – Breathless on exertion e.g. incline
- III – Breathless on minimal exertion e.g. flat
- IV – Breathless at rest

Treatments can be divided into

- Symptomatic e.g. Diuretics
- Disease Modifying e.g. ACE-inhibitors, beta-blockers, aldosterone blockers



THE MDTEA PODCAST PROVIDES EDUCATION ON AGEING FOR ALL HEALTHCARE PROFESSIONALS WORKING WITH OLDER ADULTS
TWITTER: @MDTEA_PODCAST
FACEBOOK.COM/MDTEAPODCAST
VISIT WWW.THEHEARINGAIDPODCASTS.ORG.UK FOR MORE INFORMATION, SHOW NOTES, TO LISTEN ON THE WEB AND TO SIGN UP TO OUR MAILING LIST